

Flood Mitigation Project (FMP)

INSERT LOGO HERE

Title -

ID# 063000027 Sponsor -

RFPG recommend? - Reason for Recommendation -

Project Description

The project, improvements to Bintliff Ditch (HCFCD Channel D133-00-00) and the Sharpstown Area, is composed of various drainage and flood control improvements including improved channel conveyance and stormwater detention basins.

Watershed HUC# (if known) - Emergency Need? -
Drainage area (mi² est.) -
Associated FME's - County -
Associated FMS's - Associated FMP's -

Existing 100-Year Flood Risk

Flood risk type: Riverine? No Coastal? No Local? No Playa? No Other? Yes
Population at risk - # of structures - Critical facilities -
Farm/Ranch land impacted (acres) - Roadway(s) impacted (length) -
Number of low water crossings - Historical road closures -

100-Year Flood Risk Reduction

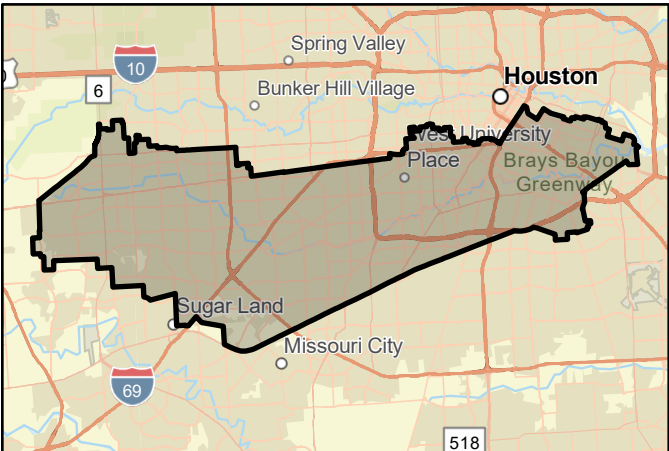
Population removed from 100-yr - # of structures removed from 100-yr -
Critical facilities removed from 100-yr - Farm/Ranch land removed from 100-yr (acres) -
Road removed from 100-yr (miles) - Low water crossings removed from 100-yr -
Other benefits - Reduction in # of road closures over 10 years -

Impacts

Negative impacts? - Negative impacts description -
Water supply contributions? - Water supply contribution description -

Estimated Cost

Project Cost \$0 % Nature-Based - BCR -
Recurring costs - Issues -



FMP area



Regional view of FMP area

Flood Mitigation Project (FMP)

TitleBrazoria,Galveston,Fort Bend,Chambers,Harris,Liberty

ID#063000128Sponsor

RFPG recommend?-Reason for Recommendation-



Project Description

This evaluation involves ecosystem restoration efforts planned along the GIWW such as the restoration of wetlands and islands, construction of breakwaters, and oyster reef scaling will provide natural buffer from coastal storm surge and prevent erosion.

Watershed HUC# (if known)120401030201,120401030108,12040103010Emergency Need?-

Drainage area (mi² est.)1,559

Associated FME's -CountyBrazoria,Galveston,Fort

Associated FMS's -Associated FMP's -

Existing 100-Year Flood Risk

Flood risk type:Riverine?-Coastal?-Local?-Playa?-Other?-

Population at risk -# of structures -Critical facilities -

Farm/Ranch land impacted (acres) -Roadway(s) impacted (length) -

Number of low water crossings -Historical road closures -

100-Year Flood Risk Reduction

Population removed from 100-yr -# of structures removed from 100-yr -

Critical facilities removed from 100-yr -Farm/Ranch land removed from 100-yr (acres) -

Road removed from 100-yr (miles) -Low water crossings removed from 100-yr -

Other benefits -Reduction in # of road closures over 10 years -

Impacts

Negative impacts?-Negative impacts description -

Water supply contributions?-Water supply contribution description -

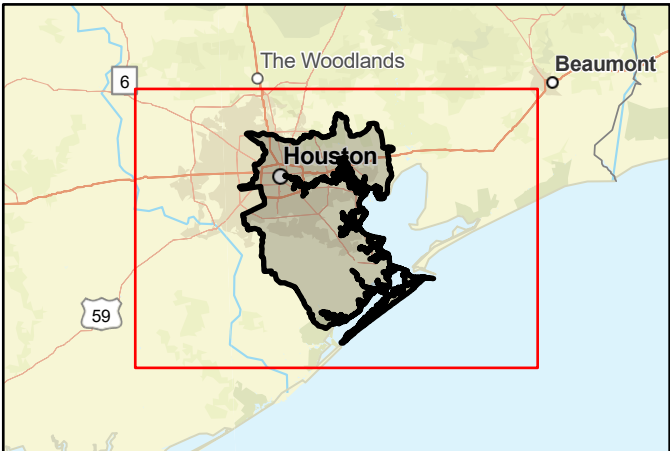
Estimated Cost

Project Cost\$1,200,169,000% Nature-Based -BCR -

Recurring costs -Issues -



FMP area



Regional view of FMP area

Flood Mitigation Project (FMP)

TitleBrazoria

ID#063000136Sponsor

RFPG recommend?-Reason for Recommendation-



Project Description

Place copies of FEMA Flood-related technical bulletins in County libraries.

Watershed HUC# (if known)120402040300,120402040200,12040204040Emergency Need?-

Drainage area (mi² est.)1,482

Associated FME's -CountyBrazoria

Associated FMS's -Associated FMP's -

Existing 100-Year Flood Risk

Flood risk type:Riverine?-Coastal?-Local?-Playa?-Other?-

Population at risk -# of structures -Critical facilities -

Farm/Ranch land impacted (acres) -Roadway(s) impacted (length) -

Number of low water crossings -Historical road closures -

100-Year Flood Risk Reduction

Population removed from 100-yr -# of structures removed from 100-yr -

Critical facilities removed from 100-yr -Farm/Ranch land removed from 100-yr (acres) -

Road removed from 100-yr (miles) -Low water crossings removed from 100-yr -

Other benefits -Reduction in # of road closures over 10 years -

Impacts

Negative impacts?-Negative impacts description -

Water supply contributions?-Water supply contribution description -

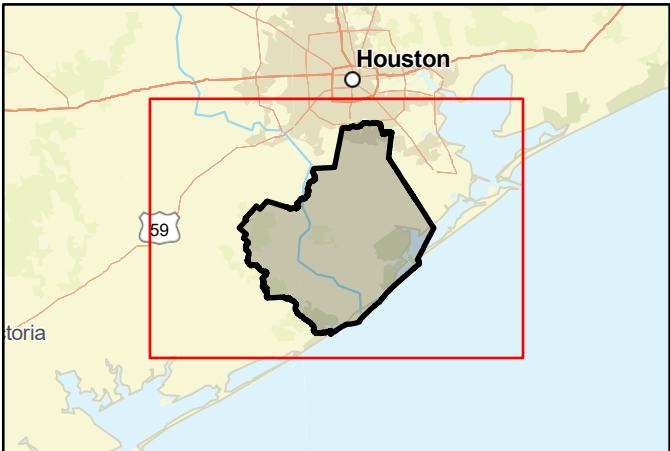
Estimated Cost

Project Cost\$21,000% Nature-Based -BCR -

Recurring costs -Issues -



FMP area



Regional view of FMP area

Flood Mitigation Project (FMP)

TitleHarris,Liberty,Montgomery,San Jacinto,Walker

ID#063000058Sponsor

RFPG recommend?-Reason for Recommendation-



Project Description

Reduce flooding in the Caney Creek watershed by benching a 7.8-mile-long stretch to increase conveyance capacity. Must be constructed with 1.2-mile long Detention at FM1097 and 0.8-mile-long at SH105 to capture runoff from Caney Creek.

Watershed HUC# (if known)-Emergency Need?-

Drainage area (mi² est.)371

Associated FME's-CountyHarris,Liberty,Montgomery,San

Associated FMS's-Associated FMP's-

Existing 100-Year Flood Risk

Flood risk type:Riverine?-Coastal?-Local?-Playa?-Other?-

Population at risk-# of structures-Critical facilities-

Farm/Ranch land impacted (acres)-Roadway(s) impacted (length)-

Number of low water crossings-Historical road closures-

100-Year Flood Risk Reduction

Population removed from 100-yr-# of structures removed from 100-yr-

Critical facilities removed from 100-yr-Farm/Ranch land removed from 100-yr (acres)-

Road removed from 100-yr (miles)-Low water crossings removed from 100-yr-

Other benefits-Reduction in # of road closures over 10 years-

Impacts

Negative impacts?-Negative impacts description-

Water supply contributions?-Water supply contribution description-

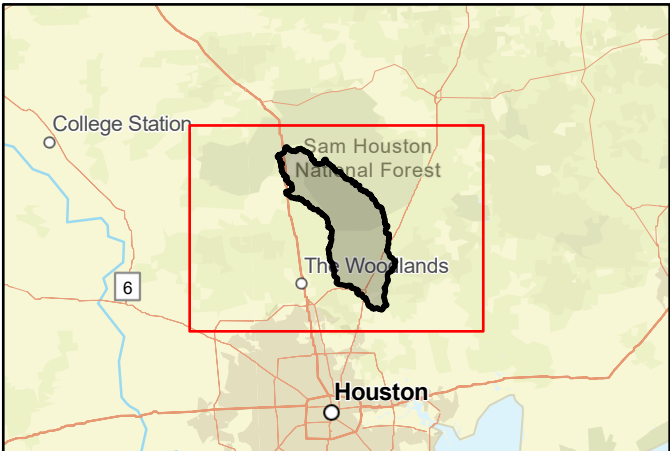
Estimated Cost

Project Cost\$527,178,000% Nature-Based-BCR-

Recurring costs-Issues-



FMP area



Regional view of FMP area

Flood Mitigation Project (FMP)

TitleBrazoria,Galveston,Fort Bend

ID#063000201Sponsor

RFPG recommend?-Reason for Recommendation-



Project Description

A unified land development code combines all land use controls into a single document with a logical structure that is user friendly. Cost is time, data and preparation of a unified land development code.

Watershed HUC# (if known)120402040300,120402040200,12040204040Emergency Need?-

Drainage area (mi² est.)25

Associated FME's-CountyBrazoria,Galveston,Fort Bend

Associated FMS's-Associated FMP's-

Existing 100-Year Flood Risk

Flood risk type:Riverine?-Coastal?-Local?-Playa?-Other?-

Population at risk-# of structures-Critical facilities-

Farm/Ranch land impacted (acres)-Roadway(s) impacted (length)-

Number of low water crossings-Historical road closures-

100-Year Flood Risk Reduction

Population removed from 100-yr-# of structures removed from 100-yr-

Critical facilities removed from 100-yr-Farm/Ranch land removed from 100-yr (acres)-

Road removed from 100-yr (miles)-Low water crossings removed from 100-yr-

Other benefits-Reduction in # of road closures over 10 years-

Impacts

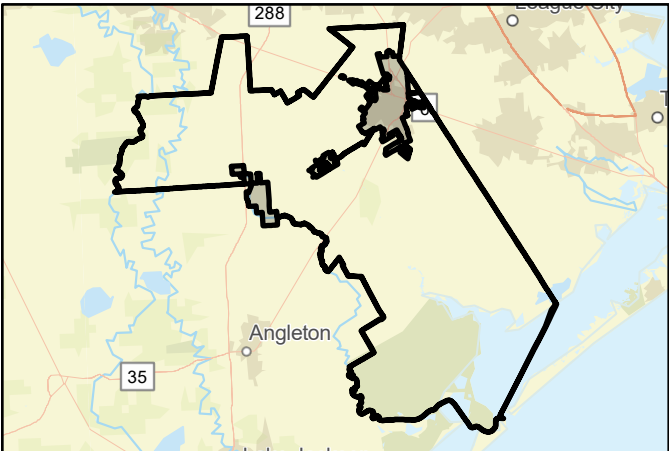
Negative impacts?-Negative impacts description-

Water supply contributions?-Water supply contribution description-

Estimated Cost

Project Cost\$100,000% Nature-Based-BCR-

Recurring costs-Issues-



FMP area



Regional view of FMP area

Flood Mitigation Project (FMP)

INSERT LOGO HERE

Title Galveston

ID# 063000114 Sponsor

RFPG recommend? - Reason for Recommendation -

Project Description

Update regulations and permit requirements to address enhances hazard mitigation strategies.

Watershed HUC# (if known) 120402040200 Emergency Need? -
Drainage area (mi² est.) 0
Associated FME's - County Galveston
Associated FMS's - Associated FMP's -

Existing 100-Year Flood Risk

Flood risk type: Riverine? - Coastal? - Local? - Playa? - Other? -
Population at risk - # of structures - Critical facilities -
Farm/Ranch land impacted (acres) - Roadway(s) impacted (length) -
Number of low water crossings - Historical road closures -

100-Year Flood Risk Reduction

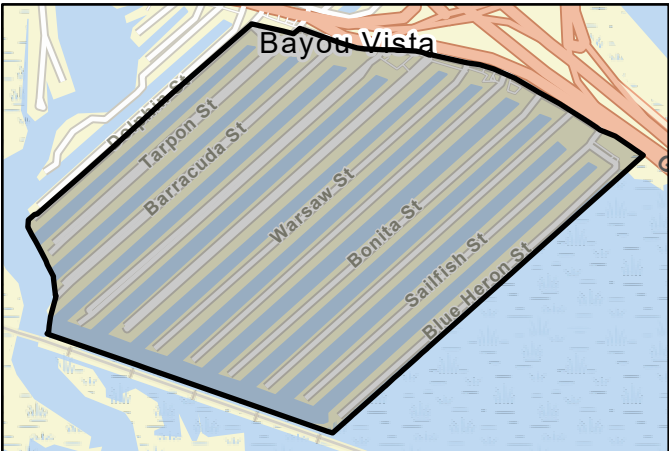
Population removed from 100-yr - # of structures removed from 100-yr -
Critical facilities removed from 100-yr - Farm/Ranch land removed from 100-yr (acres) -
Road removed from 100-yr (miles) - Low water crossings removed from 100-yr -
Other benefits - Reduction in # of road closures over 10 years -

Impacts

Negative impacts? - Negative impacts description -
Water supply contributions? - Water supply contribution description -

Estimated Cost

Project Cost \$109,000 % Nature-Based - BCR -
Recurring costs - Issues -



FMP area



Regional view of FMP area

Flood Mitigation Project (FMP)

TitleGalveston,Harris

ID#063000139Sponsor

RFPG recommend?-Reason for Recommendation-



Project Description

The Stormwater management plan is focused on six minimum measures regarding what is being done to prevent stormwater pollution. Annual reporting and renewals are required to ensure compliance is met.

Watershed HUC# (if known)120402040100Emergency Need?-

Drainage area (mi² est.)1

Associated FME's-CountyGalveston,Harris

Associated FMS's-Associated FMP's-

Existing 100-Year Flood Risk

Flood risk type:Riverine?-Coastal?-Local?-Playa?-Other?-

Population at risk-# of structures-Critical facilities-

Farm/Ranch land impacted (acres)-Roadway(s) impacted (length)-

Number of low water crossings-Historical road closures-

100-Year Flood Risk Reduction

Population removed from 100-yr-# of structures removed from 100-yr-

Critical facilities removed from 100-yr-Farm/Ranch land removed from 100-yr (acres)-

Road removed from 100-yr (miles)-Low water crossings removed from 100-yr-

Other benefits-Reduction in # of road closures over 10 years-

Impacts

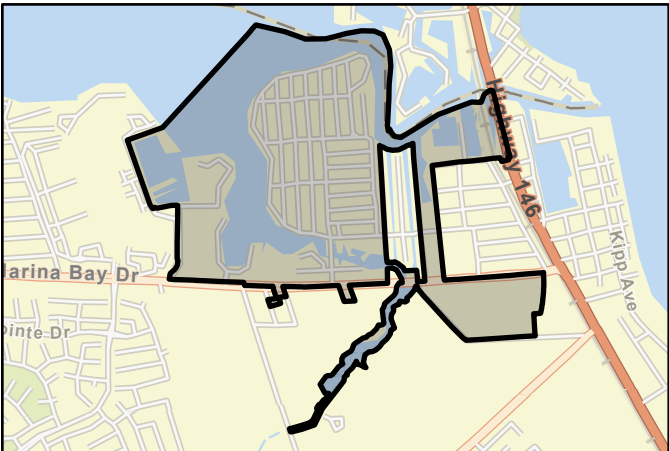
Negative impacts?-Negative impacts description-

Water supply contributions?-Water supply contribution description-

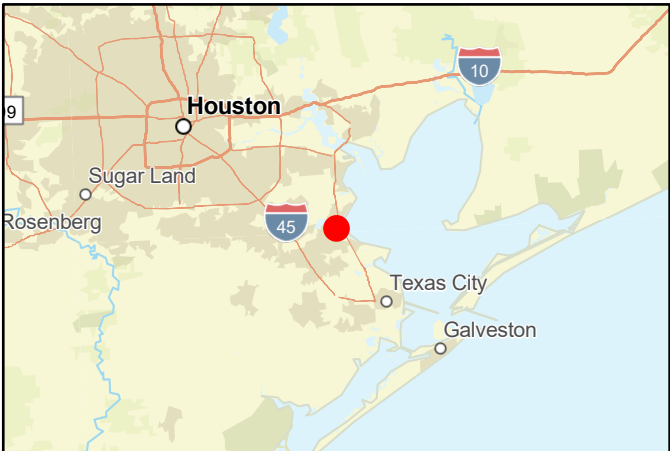
Estimated Cost

Project Cost\$109,000% Nature-Based-BCR-

Recurring costs-Issues-



FMP area



Regional view of FMP area

Flood Mitigation Project (FMP)

INSERT LOGO HERE

Title Galveston,Harris

ID# 063000140 Sponsor

RFPG recommend? - Reason for Recommendation -

Project Description

Update regulations and permit requirements

Watershed HUC# (if known) 120402040100 Emergency Need? -
Drainage area (mi² est.) 1
Associated FME's - County Galveston,Harris
Associated FMS's - Associated FMP's -

Existing 100-Year Flood Risk

Flood risk type: Riverine? - Coastal? - Local? - Playa? - Other? -
Population at risk - # of structures - Critical facilities -
Farm/Ranch land impacted (acres) - Roadway(s) impacted (length) -
Number of low water crossings - Historical road closures -

100-Year Flood Risk Reduction

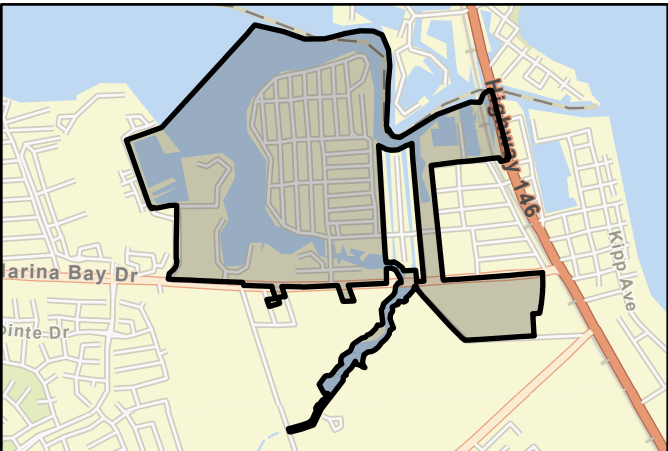
Population removed from 100-yr - # of structures removed from 100-yr -
Critical facilities removed from 100-yr - Farm/Ranch land removed from 100-yr (acres) -
Road removed from 100-yr (miles) - Low water crossings removed from 100-yr -
Other benefits - Reduction in # of road closures over 10 years -

Impacts

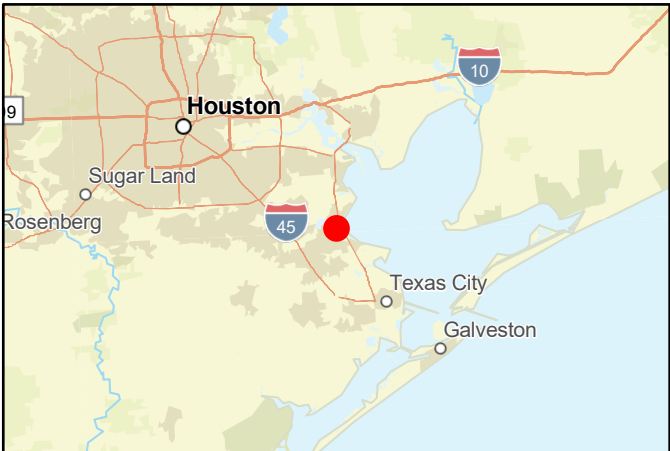
Negative impacts? - Negative impacts description -
Water supply contributions? - Water supply contribution description -

Estimated Cost

Project Cost \$109,000 % Nature-Based - BCR -
Recurring costs - Issues -



FMP area



Regional view of FMP area

Flood Mitigation Project (FMP)

INSERT LOGO HERE

Title

ID# Sponsor

RFPG recommend? Reason for Recommendation

Project Description

The city shall adopt a land-use ordinance which prohibits building residential or commercial structures in the 100-year floodplain

Watershed HUC# (if known) Emergency Need?
Drainage area (mi² est.)
Associated FME's County
Associated FMS's Associated FMP's

Existing 100-Year Flood Risk

Flood risk type: Riverine? Coastal? Local? Playa? Other?
Population at risk # of structures Critical facilities
Farm/Ranch land impacted (acres) Roadway(s) impacted (length)
Number of low water crossings Historical road closures

100-Year Flood Risk Reduction

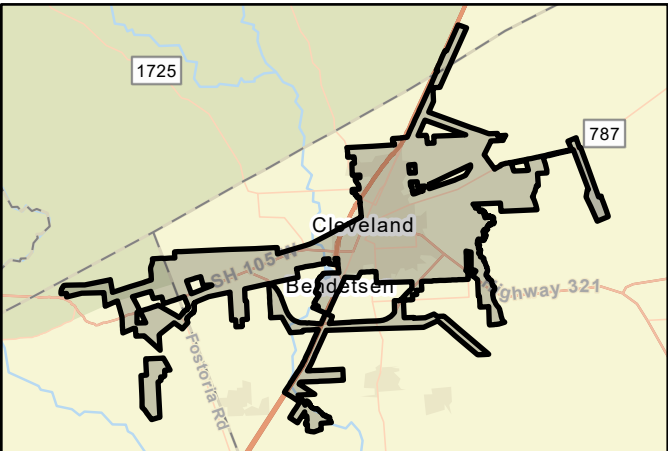
Population removed from 100-yr # of structures removed from 100-yr
Critical facilities removed from 100-yr Farm/Ranch land removed from 100-yr (acres)
Road removed from 100-yr (miles) Low water crossings removed from 100-yr
Other benefits Reduction in # of road closures over 10 years

Impacts

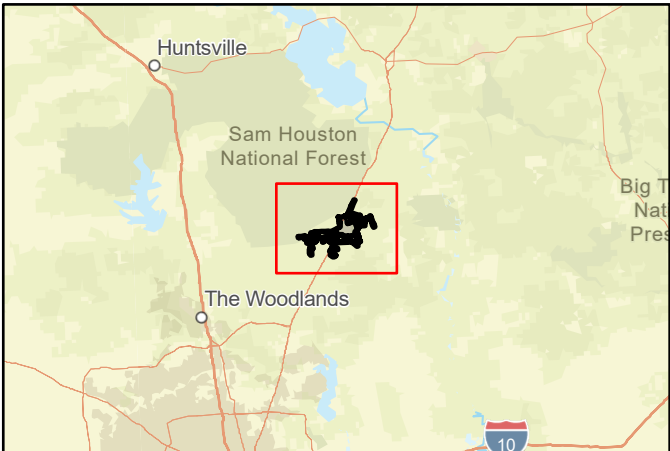
Negative impacts? Negative impacts description
Water supply contributions? Water supply contribution description

Estimated Cost

Project Cost % Nature-Based BCR
Recurring costs Issues



FMP area



Regional view of FMP area

Flood Mitigation Project (FMP)

INSERT LOGO HERE

Title

ID# Sponsor

RFPG recommend? Reason for Recommendation

Project Description

Adopt a land use ordinance which requires any structure within the 100-year floodplain to be elevated 2 feet

Watershed HUC# (if known) Emergency Need?
Drainage area (mi² est.)
Associated FME's County
Associated FMS's Associated FMP's

Existing 100-Year Flood Risk

Flood risk type: Riverine? Coastal? Local? Playa? Other?
Population at risk # of structures Critical facilities
Farm/Ranch land impacted (acres) Roadway(s) impacted (length)
Number of low water crossings Historical road closures

100-Year Flood Risk Reduction

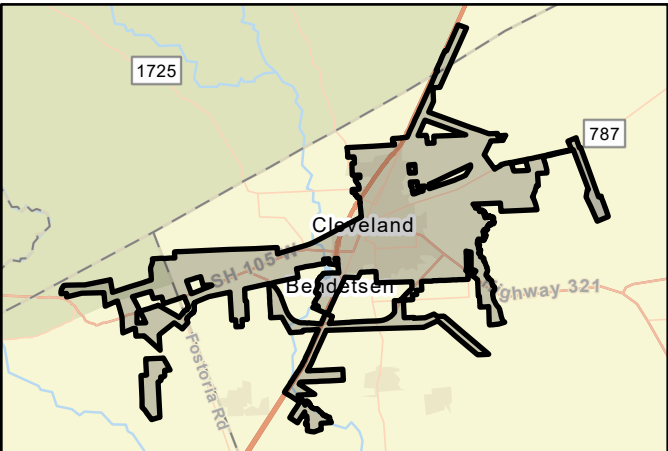
Population removed from 100-yr # of structures removed from 100-yr
Critical facilities removed from 100-yr Farm/Ranch land removed from 100-yr (acres)
Road removed from 100-yr (miles) Low water crossings removed from 100-yr
Other benefits Reduction in # of road closures over 10 years

Impacts

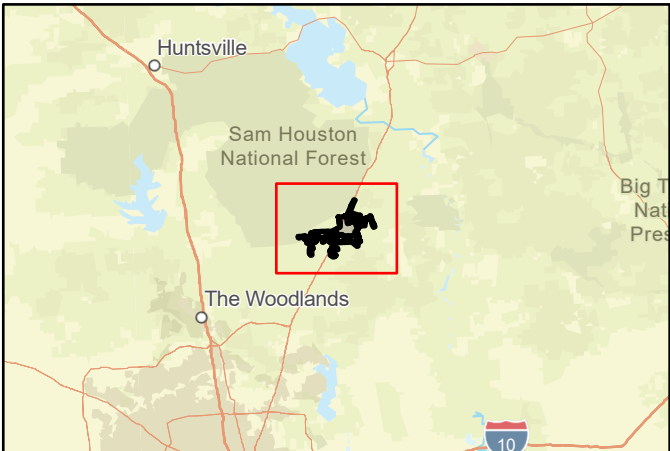
Negative impacts? Negative impacts description
Water supply contributions? Water supply contribution description

Estimated Cost

Project Cost % Nature-Based BCR
Recurring costs Issues



FMP area



Regional view of FMP area

Flood Mitigation Project (FMP)

INSERT LOGO HERE

Title

ID# Sponsor

RFPG recommend? Reason for Recommendation

Project Description

Adopt 25-foot setback from pipeline right-of-way

Watershed HUC# (if known) Emergency Need?
Drainage area (mi² est.)
Associated FME's County
Associated FMS's Associated FMP's

Existing 100-Year Flood Risk

Flood risk type: Riverine? Coastal? Local? Playa? Other?
Population at risk # of structures Critical facilities
Farm/Ranch land impacted (acres) Roadway(s) impacted (length)
Number of low water crossings Historical road closures

100-Year Flood Risk Reduction

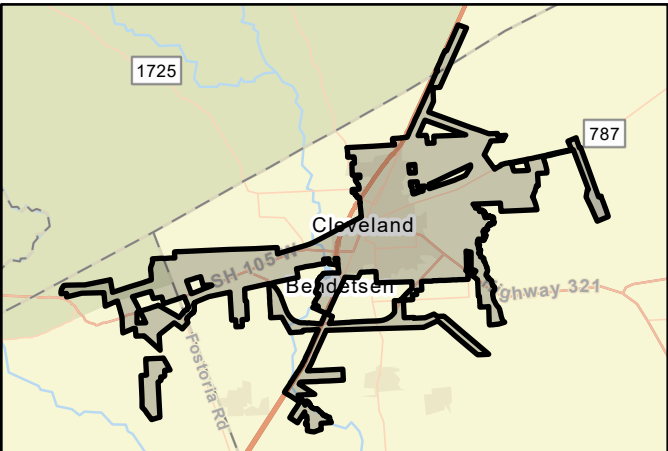
Population removed from 100-yr # of structures removed from 100-yr
Critical facilities removed from 100-yr Farm/Ranch land removed from 100-yr (acres)
Road removed from 100-yr (miles) Low water crossings removed from 100-yr
Other benefits Reduction in # of road closures over 10 years

Impacts

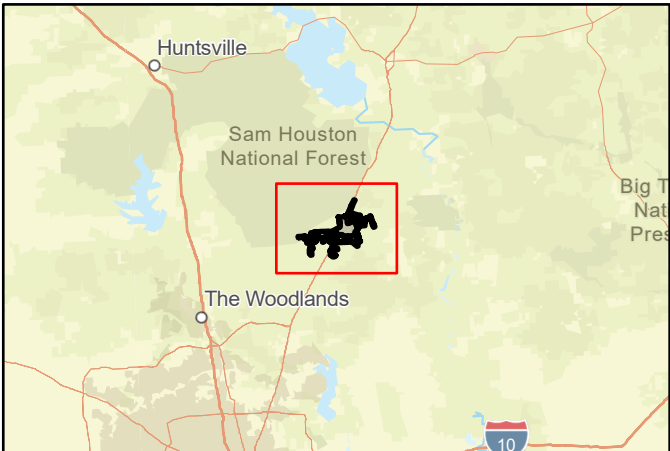
Negative impacts? Negative impacts description
Water supply contributions? Water supply contribution description

Estimated Cost

Project Cost % Nature-Based BCR
Recurring costs Issues



FMP area



Regional view of FMP area

Flood Mitigation Project (FMP)

INSERT LOGO HERE

Title Galveston,Harris

ID# 063000113 Sponsor

RFPG recommend? - Reason for Recommendation -

Project Description

Adopt higher codes and update ordinances and regulation to promote hazard mitigation strategies

Watershed HUC# (if known) 120402040200,120402040100 Emergency Need? -
Drainage area (mi² est.) 21
Associated FME's - County Galveston,Harris
Associated FMS's - Associated FMP's -

Existing 100-Year Flood Risk

Flood risk type: Riverine? - Coastal? - Local? - Playa? - Other? -
Population at risk - # of structures - Critical facilities -
Farm/Ranch land impacted (acres) - Roadway(s) impacted (length) -
Number of low water crossings - Historical road closures -

100-Year Flood Risk Reduction

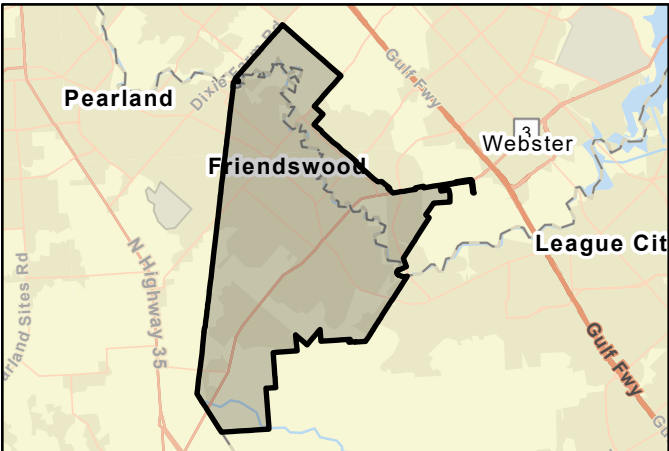
Population removed from 100-yr - # of structures removed from 100-yr -
Critical facilities removed from 100-yr - Farm/Ranch land removed from 100-yr (acres) -
Road removed from 100-yr (miles) - Low water crossings removed from 100-yr -
Other benefits - Reduction in # of road closures over 10 years -

Impacts

Negative impacts? - Negative impacts description -
Water supply contributions? - Water supply contribution description -

Estimated Cost

Project Cost \$109,000 % Nature-Based - BCR -
Recurring costs - Issues -



FMP area



Regional view of FMP area

Flood Mitigation Project (FMP)

TitleGalveston

ID#063000153Sponsor

RFPG recommend?-Reason for Recommendation-



Project Description

Consider adoption and enforcement of freeboard requirement into City's Flood Damage Prevention Ordinance

Watershed HUC# (if known)120402040300,120402040200,12040204040Emergency Need?-

Drainage area (mi² est.)211

Associated FME's-CountyGalveston

Associated FMS's-Associated FMP's-

Existing 100-Year Flood Risk

Flood risk type:Riverine?-Coastal?-Local?-Playa?-Other?-

Population at risk-# of structures-Critical facilities-

Farm/Ranch land impacted (acres)-Roadway(s) impacted (length)-

Number of low water crossings-Historical road closures-

100-Year Flood Risk Reduction

Population removed from 100-yr-# of structures removed from 100-yr-

Critical facilities removed from 100-yr-Farm/Ranch land removed from 100-yr (acres)-

Road removed from 100-yr (miles)-Low water crossings removed from 100-yr-

Other benefits-Reduction in # of road closures over 10 years-

Impacts

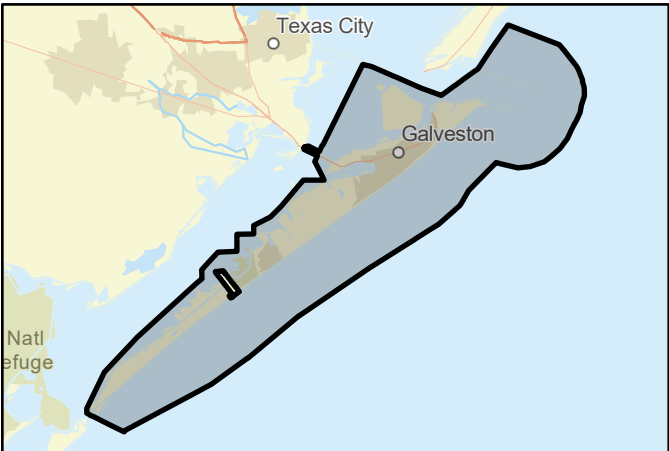
Negative impacts?-Negative impacts description-

Water supply contributions?-Water supply contribution description-

Estimated Cost

Project Cost\$100,000% Nature-Based-BCR-

Recurring costs-Issues-



FMP area



Regional view of FMP area

Flood Mitigation Project (FMP)

TitleGalveston

ID#063000152Sponsor

RFPG recommend?-Reason for Recommendation-



Project Description

Develop proposed land use mapping to allow easier consideration of hazards

Watershed HUC# (if known)120402040300,120402040200,12040204040Emergency Need?-

Drainage area (mi² est.)211

Associated FME's-CountyGalveston

Associated FMS's-Associated FMP's-

Existing 100-Year Flood Risk

Flood risk type:Riverine?-Coastal?-Local?-Playa?-Other?-

Population at risk-# of structures-Critical facilities-

Farm/Ranch land impacted (acres)-Roadway(s) impacted (length)-

Number of low water crossings-Historical road closures-

100-Year Flood Risk Reduction

Population removed from 100-yr-# of structures removed from 100-yr-

Critical facilities removed from 100-yr-Farm/Ranch land removed from 100-yr (acres)-

Road removed from 100-yr (miles)-Low water crossings removed from 100-yr-

Other benefits-Reduction in # of road closures over 10 years-

Impacts

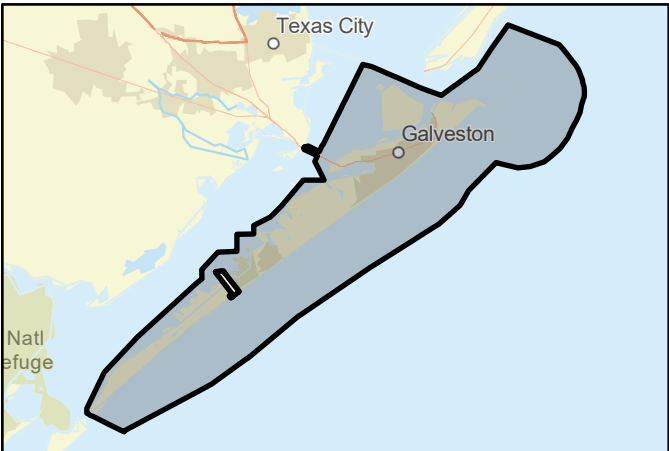
Negative impacts?-Negative impacts description-

Water supply contributions?-Water supply contribution description-

Estimated Cost

Project Cost\$11,000% Nature-Based-BCR-

Recurring costs-Issues-



FMP area



Regional view of FMP area

Flood Mitigation Project (FMP)

INSERT LOGO HERE

TitleBrazoria,Galveston

ID#063000142Sponsor

RFPG recommend?-Reason for Recommendation-

Project Description

Improve regulations and permit requirements to promote hazard mitigation strategies.

Watershed HUC# (if known)120402040300,120402040200Emergency Need?-

Drainage area (mi² est.)91

Associated FME's-CountyBrazoria,Galveston

Associated FMS's-Associated FMP's-

Existing 100-Year Flood Risk

Flood risk type:Riverine?-Coastal?-Local?-Playa?-Other?-

Population at risk-# of structures-Critical facilities-

Farm/Ranch land impacted (acres)-Roadway(s) impacted (length)-

Number of low water crossings-Historical road closures-

100-Year Flood Risk Reduction

Population removed from 100-yr-# of structures removed from 100-yr-

Critical facilities removed from 100-yr-Farm/Ranch land removed from 100-yr (acres)-

Road removed from 100-yr (miles)-Low water crossings removed from 100-yr-

Other benefits-Reduction in # of road closures over 10 years-

Impacts

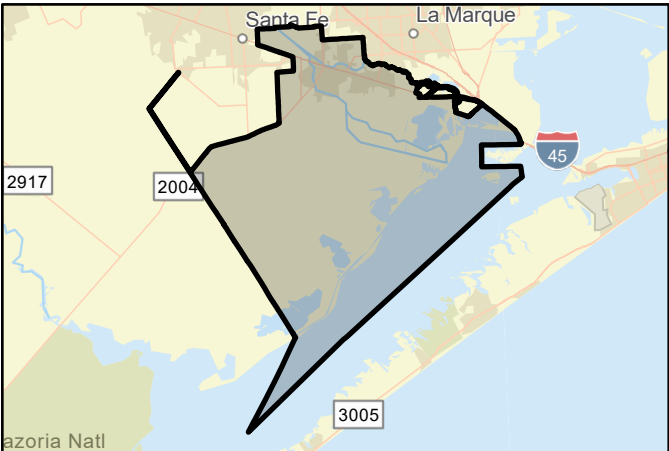
Negative impacts?-Negative impacts description-

Water supply contributions?-Water supply contribution description-

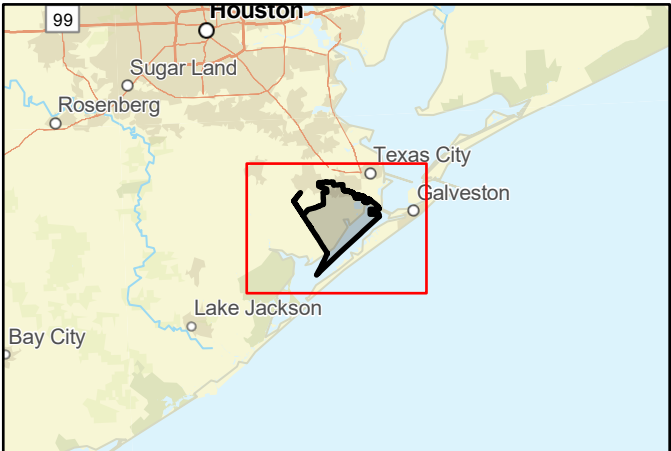
Estimated Cost

Project Cost\$109,000% Nature-Based-BCR-

Recurring costs-Issues-



FMP area



Regional view of FMP area

Flood Mitigation Project (FMP)

INSERT LOGO HERE

Title Galveston

ID# 063000143 Sponsor

RFPG recommend? - Reason for Recommendation -

Project Description

Improve regulations and permit requirements to promote hazard mitigation strategies.

Watershed HUC# (if known) 120402040300 Emergency Need? -
Drainage area (mi² est.) 1
Associated FME's - County Galveston
Associated FMS's - Associated FMP's -

Existing 100-Year Flood Risk

Flood risk type: Riverine? - Coastal? - Local? - Playa? - Other? -
Population at risk - # of structures - Critical facilities -
Farm/Ranch land impacted (acres) - Roadway(s) impacted (length) -
Number of low water crossings - Historical road closures -

100-Year Flood Risk Reduction

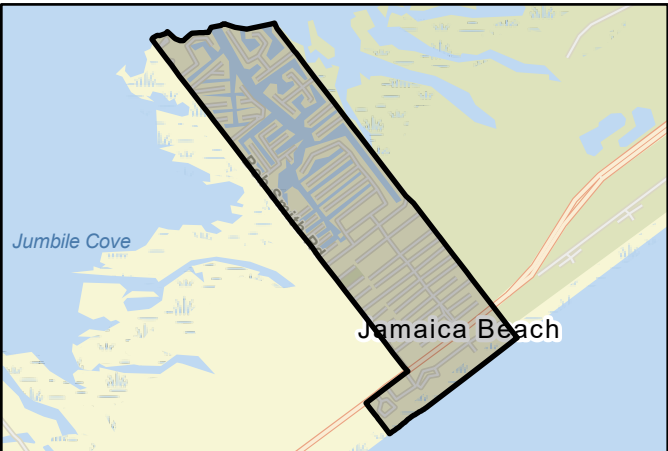
Population removed from 100-yr - # of structures removed from 100-yr -
Critical facilities removed from 100-yr - Farm/Ranch land removed from 100-yr (acres) -
Road removed from 100-yr (miles) - Low water crossings removed from 100-yr -
Other benefits - Reduction in # of road closures over 10 years -

Impacts

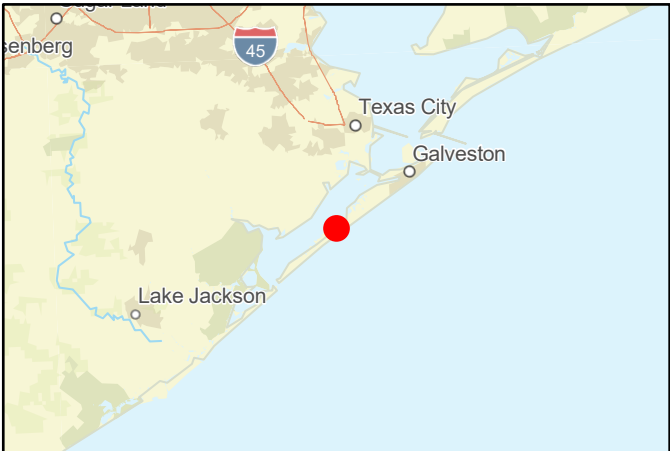
Negative impacts? - Negative impacts description -
Water supply contributions? - Water supply contribution description -

Estimated Cost

Project Cost \$109,000 % Nature-Based - BCR -
Recurring costs - Issues -



FMP area



Regional view of FMP area

Flood Mitigation Project (FMP)

TitleGalveston,Chambers

ID#063000144Sponsor

RFPG recommend?-Reason for Recommendation-



Project Description

Improve regulations and permit requirements to promote hazard mitigation strategies.

Watershed HUC# (if known)120402040200,120402040100Emergency Need?-

Drainage area (mi² est.)2

Associated FME's-CountyGalveston,Chambers

Associated FMS's-Associated FMP's-

Existing 100-Year Flood Risk

Flood risk type:Riverine?-Coastal?-Local?-Playa?-Other?-

Population at risk-# of structures-Critical facilities-

Farm/Ranch land impacted (acres)-Roadway(s) impacted (length)-

Number of low water crossings-Historical road closures-

100-Year Flood Risk Reduction

Population removed from 100-yr-# of structures removed from 100-yr-

Critical facilities removed from 100-yr-Farm/Ranch land removed from 100-yr (acres)-

Road removed from 100-yr (miles)-Low water crossings removed from 100-yr-

Other benefits-Reduction in # of road closures over 10 years-

Impacts

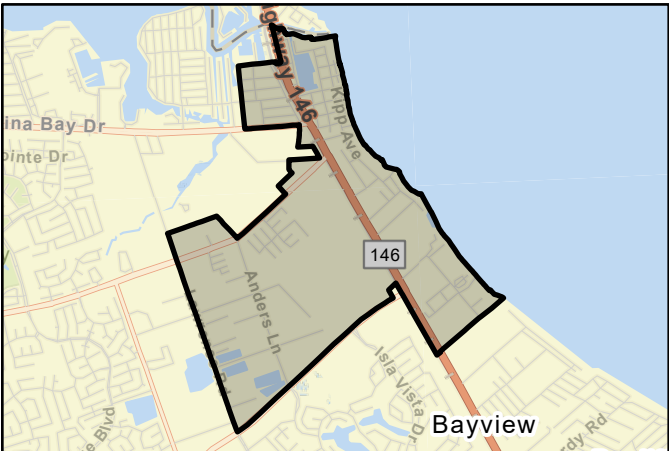
Negative impacts?-Negative impacts description-

Water supply contributions?-Water supply contribution description-

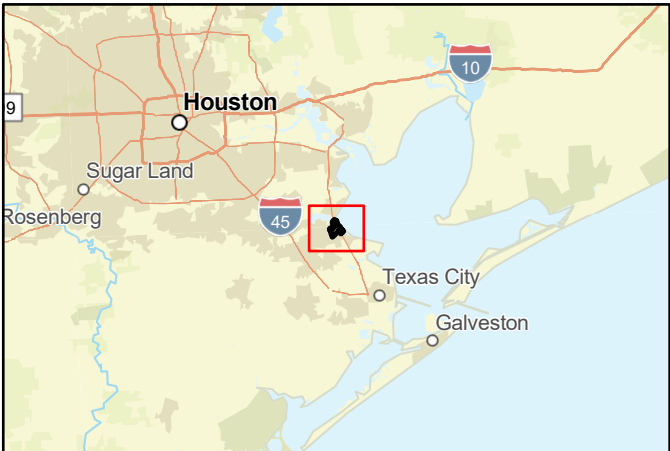
Estimated Cost

Project Cost\$109,000% Nature-Based-BCR-

Recurring costs-Issues-



FMP area



Regional view of FMP area

Flood Mitigation Project (FMP)

TitleGalveston,Chambers

ID#063000145Sponsor

RFPG recommend?-Reason for Recommendation-



Project Description

Update floodplain ordinance to ensure compliance with minimum standard of NFIP.

Watershed HUC# (if known)120402040200,120402040100Emergency Need?-

Drainage area (mi² est.)2

Associated FME's-CountyGalveston,Chambers

Associated FMS's-Associated FMP's-

Existing 100-Year Flood Risk

Flood risk type:Riverine?-Coastal?-Local?-Playa?-Other?-

Population at risk-# of structures-Critical facilities-

Farm/Ranch land impacted (acres)-Roadway(s) impacted (length)-

Number of low water crossings-Historical road closures-

100-Year Flood Risk Reduction

Population removed from 100-yr-# of structures removed from 100-yr-

Critical facilities removed from 100-yr-Farm/Ranch land removed from 100-yr (acres)-

Road removed from 100-yr (miles)-Low water crossings removed from 100-yr-

Other benefits-Reduction in # of road closures over 10 years-

Impacts

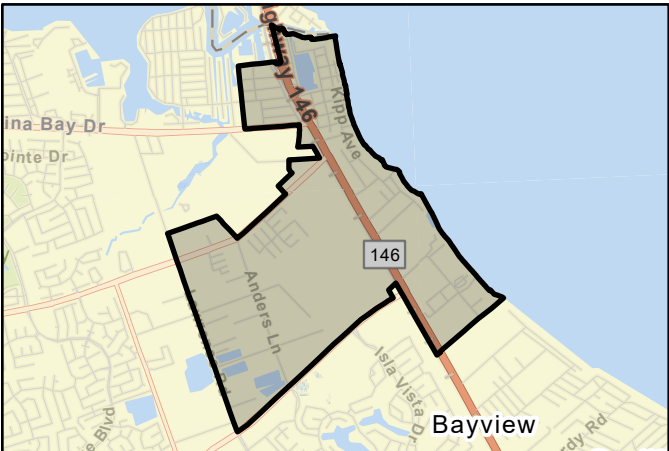
Negative impacts?-Negative impacts description-

Water supply contributions?-Water supply contribution description-

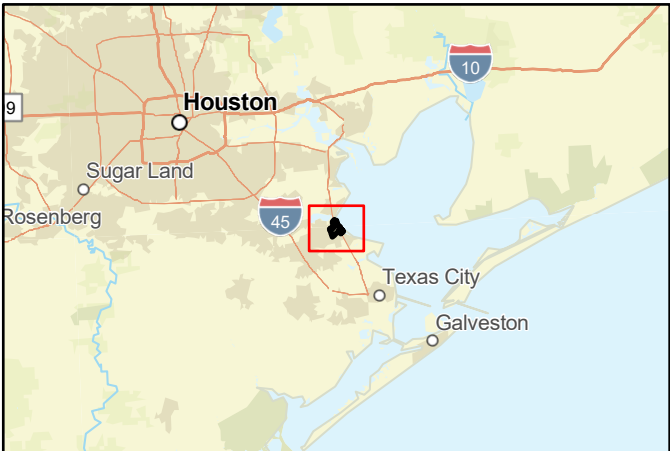
Estimated Cost

Project Cost\$109,000% Nature-Based-BCR-

Recurring costs-Issues-



FMP area



Regional view of FMP area

Flood Mitigation Project (FMP)

TitleGalveston

ID#063000146Sponsor

RFPG recommend?-Reason for Recommendation-



Project Description

Improve regulations and permit requirements to promote hazard mitigation strategies

Watershed HUC# (if known)120402040200Emergency Need?-

Drainage area (mi² est.)14

Associated FME's-CountyGalveston

Associated FMS's-Associated FMP's-

Existing 100-Year Flood Risk

Flood risk type:Riverine?-Coastal?-Local?-Playa?-Other?-

Population at risk-# of structures-Critical facilities-

Farm/Ranch land impacted (acres)-Roadway(s) impacted (length)-

Number of low water crossings-Historical road closures-

100-Year Flood Risk Reduction

Population removed from 100-yr-# of structures removed from 100-yr-

Critical facilities removed from 100-yr-Farm/Ranch land removed from 100-yr (acres)-

Road removed from 100-yr (miles)-Low water crossings removed from 100-yr-

Other benefits-Reduction in # of road closures over 10 years-

Impacts

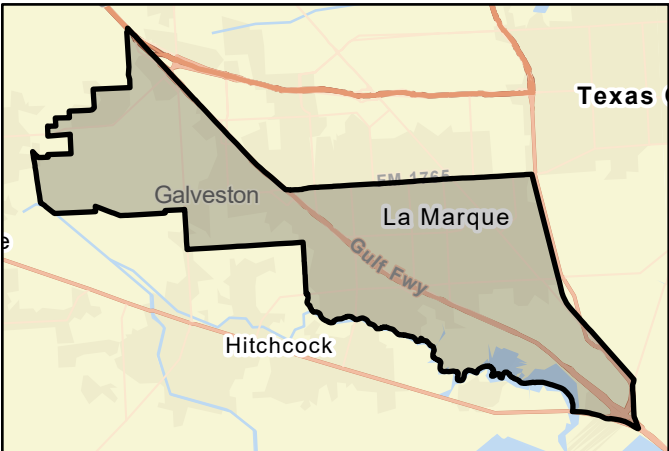
Negative impacts?-Negative impacts description-

Water supply contributions?-Water supply contribution description-

Estimated Cost

Project Cost\$109,000% Nature-Based-BCR-

Recurring costs-Issues-



FMP area



Regional view of FMP area

Flood Mitigation Project (FMP)

TitleGalveston,Harris

ID#063000115Sponsor

RFPG recommend?-Reason for Recommendation-



Project Description

Update city ordinance to require 24" of freeboard in the floodplain.

Watershed HUC# (if known)120402040200,120402040100Emergency Need?-

Drainage area (mi² est.)53

Associated FME's-CountyGalveston,Harris

Associated FMS's-Associated FMP's-

Existing 100-Year Flood Risk

Flood risk type:Riverine?-Coastal?-Local?-Playa?-Other?-

Population at risk-# of structures-Critical facilities-

Farm/Ranch land impacted (acres)-Roadway(s) impacted (length)-

Number of low water crossings-Historical road closures-

100-Year Flood Risk Reduction

Population removed from 100-yr-# of structures removed from 100-yr-

Critical facilities removed from 100-yr-Farm/Ranch land removed from 100-yr (acres)-

Road removed from 100-yr (miles)-Low water crossings removed from 100-yr-

Other benefits-Reduction in # of road closures over 10 years-

Impacts

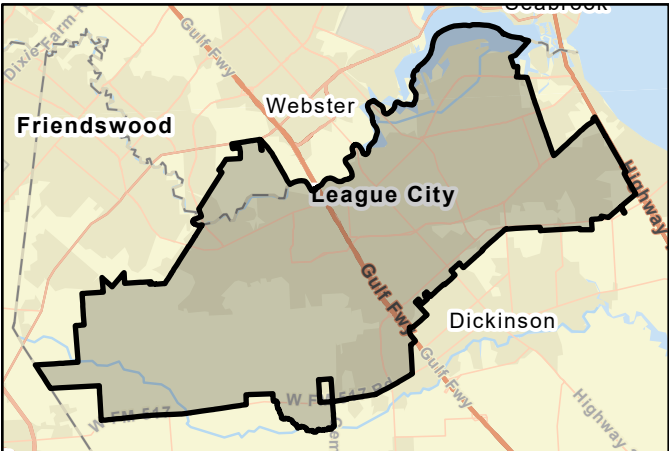
Negative impacts?-Negative impacts description-

Water supply contributions?-Water supply contribution description-

Estimated Cost

Project Cost\$109,000% Nature-Based-BCR-

Recurring costs-Issues-



FMP area



Regional view of FMP area

Flood Mitigation Project (FMP)

TitleBrazoria

ID#063000129Sponsor

RFPG recommend?-Reason for Recommendation-



Project Description

The city shall adopt a land use ordinance which requires any structure within the 100-year floodplain to be elevated 2 feet above base flood elevation.

Watershed HUC# (if known)120402040200,120402040400,12040204010Emergency Need?-

Drainage area (mi² est.)27

Associated FME's-CountyBrazoria

Associated FMS's-Associated FMP's-

Existing 100-Year Flood Risk

Flood risk type:Riverine?-Coastal?-Local?-Playa?-Other?-

Population at risk-# of structures-Critical facilities-

Farm/Ranch land impacted (acres)-Roadway(s) impacted (length)-

Number of low water crossings-Historical road closures-

100-Year Flood Risk Reduction

Population removed from 100-yr-# of structures removed from 100-yr-

Critical facilities removed from 100-yr-Farm/Ranch land removed from 100-yr (acres)-

Road removed from 100-yr (miles)-Low water crossings removed from 100-yr-

Other benefits-Reduction in # of road closures over 10 years-

Impacts

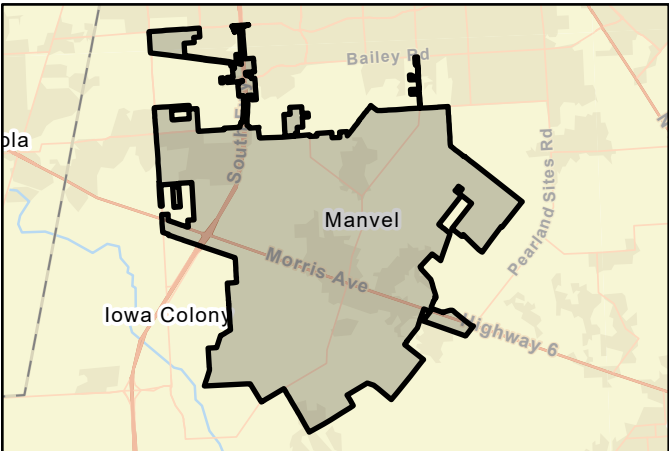
Negative impacts?-Negative impacts description-

Water supply contributions?-Water supply contribution description-

Estimated Cost

Project Cost\$103,000% Nature-Based-BCR-

Recurring costs-Issues-



FMP area



Regional view of FMP area

Flood Mitigation Project (FMP)

TitleBrazoria

ID#063000132Sponsor

RFPG recommend?-Reason for Recommendation-



Project Description

Improve GIS database to include repetitive loss properties areas and flooded structure data. Data to be used for future drainage infrastructure planning and to provide outreach and emergency services to residents in substantial risk zones.

Watershed HUC# (if known)120402040200,120402040400,12040204010Emergency Need?-

Drainage area (mi² est.)27

Associated FME's-CountyBrazoria

Associated FMS's-Associated FMP's-

Existing 100-Year Flood Risk

Flood risk type:Riverine?-Coastal?-Local?-Playa?-Other?-

Population at risk-# of structures-Critical facilities-

Farm/Ranch land impacted (acres)-Roadway(s) impacted (length)-

Number of low water crossings-Historical road closures-

100-Year Flood Risk Reduction

Population removed from 100-yr-# of structures removed from 100-yr-

Critical facilities removed from 100-yr-Farm/Ranch land removed from 100-yr (acres)-

Road removed from 100-yr (miles)-Low water crossings removed from 100-yr-

Other benefits-Reduction in # of road closures over 10 years-

Impacts

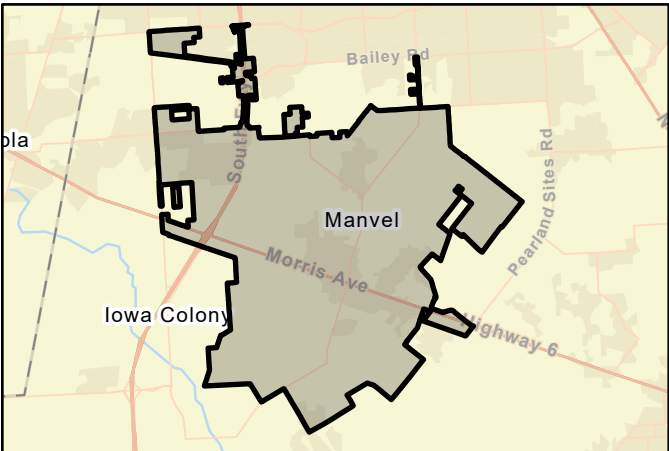
Negative impacts?-Negative impacts description-

Water supply contributions?-Water supply contribution description-

Estimated Cost

Project Cost\$21,000% Nature-Based-BCR-

Recurring costs-Issues-



FMP area



Regional view of FMP area

Flood Mitigation Project (FMP)

TitleBrazoria

ID#063000130Sponsor

RFPG recommend?-Reason for Recommendation-



Project Description

The city shall adopt a land-use ordinance which prohibits building residential or commercial structures in the 100-year floodplain

Watershed HUC# (if known)120402040200,120402040400,12040204010Emergency Need?-

Drainage area (mi² est.)27

Associated FME's-CountyBrazoria

Associated FMS's-Associated FMP's-

Existing 100-Year Flood Risk

Flood risk type:Riverine?-Coastal?-Local?-Playa?-Other?-

Population at risk-# of structures-Critical facilities-

Farm/Ranch land impacted (acres)-Roadway(s) impacted (length)-

Number of low water crossings-Historical road closures-

100-Year Flood Risk Reduction

Population removed from 100-yr-# of structures removed from 100-yr-

Critical facilities removed from 100-yr-Farm/Ranch land removed from 100-yr (acres)-

Road removed from 100-yr (miles)-Low water crossings removed from 100-yr-

Other benefits-Reduction in # of road closures over 10 years-

Impacts

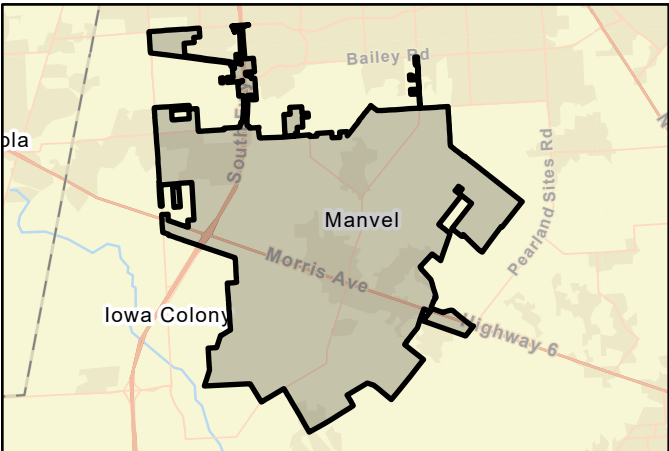
Negative impacts?-Negative impacts description-

Water supply contributions?-Water supply contribution description-

Estimated Cost

Project Cost\$103,000% Nature-Based-BCR-

Recurring costs-Issues-



FMP area



Regional view of FMP area

Flood Mitigation Project (FMP)

TitleGalveston

ID#063000149Sponsor

RFPG recommend?-Reason for Recommendation-



Project Description

Update and/or develop regulations and permits to address hazards prone to the area and include any changes in future development area

Watershed HUC# (if known)120402040300,120402040200Emergency Need?-

Drainage area (mi² est.)17

Associated FME's-CountyGalveston

Associated FMS's-Associated FMP's-

Existing 100-Year Flood Risk

Flood risk type:Riverine?-Coastal?-Local?-Playa?-Other?-

Population at risk-# of structures-Critical facilities-

Farm/Ranch land impacted (acres)-Roadway(s) impacted (length)-

Number of low water crossings-Historical road closures-

100-Year Flood Risk Reduction

Population removed from 100-yr-# of structures removed from 100-yr-

Critical facilities removed from 100-yr-Farm/Ranch land removed from 100-yr (acres)-

Road removed from 100-yr (miles)-Low water crossings removed from 100-yr-

Other benefits-Reduction in # of road closures over 10 years-

Impacts

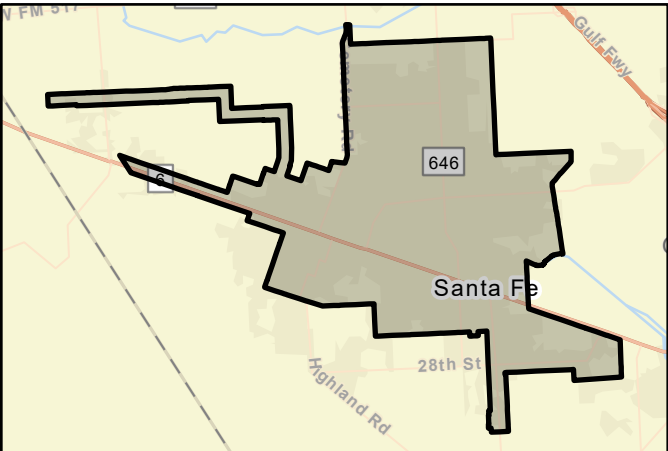
Negative impacts?-Negative impacts description-

Water supply contributions?-Water supply contribution description-

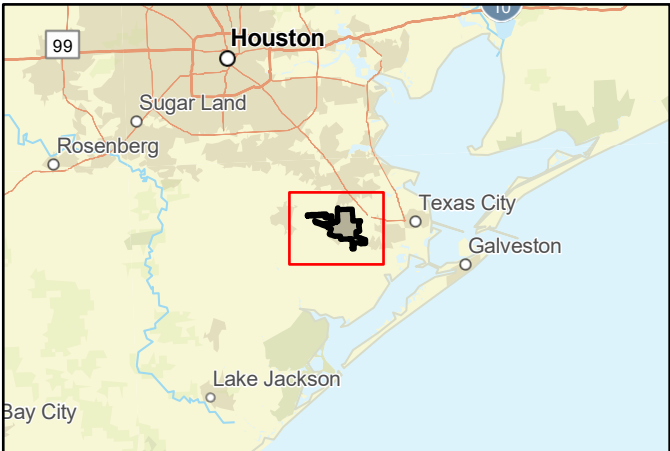
Estimated Cost

Project Cost\$109,000% Nature-Based-BCR-

Recurring costs-Issues-



FMP area



Regional view of FMP area

Flood Mitigation Project (FMP)

INSERT LOGO HERE

Title Galveston

ID# 063000148 Sponsor

RFPG recommend? - Reason for Recommendation -

Project Description

Update and/or develop regulations and permits to address hazards prone to the area and include any changes in future development area.

Watershed HUC# (if known) 120402040200 Emergency Need? -
Drainage area (mi² est.) 2
Associated FME's - County Galveston
Associated FMS's - Associated FMP's -

Existing 100-Year Flood Risk

Flood risk type: Riverine? - Coastal? - Local? - Playa? - Other? -
Population at risk - # of structures - Critical facilities -
Farm/Ranch land impacted (acres) - Roadway(s) impacted (length) -
Number of low water crossings - Historical road closures -

100-Year Flood Risk Reduction

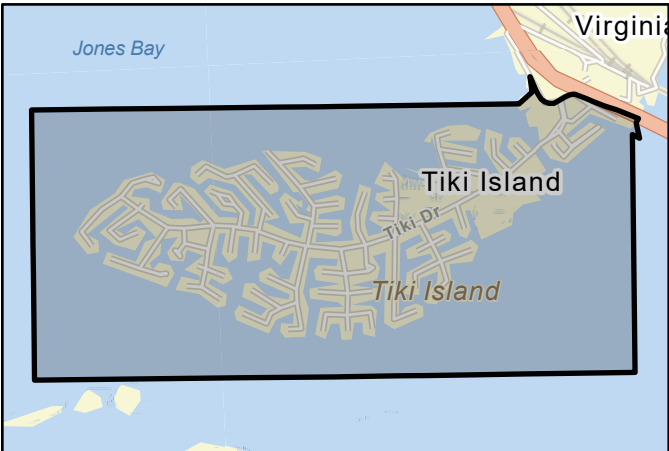
Population removed from 100-yr - # of structures removed from 100-yr -
Critical facilities removed from 100-yr - Farm/Ranch land removed from 100-yr (acres) -
Road removed from 100-yr (miles) - Low water crossings removed from 100-yr -
Other benefits - Reduction in # of road closures over 10 years -

Impacts

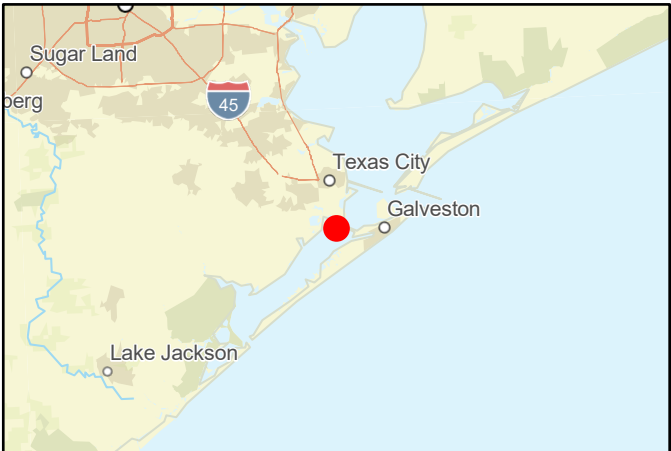
Negative impacts? - Negative impacts description -
Water supply contributions? - Water supply contribution description -

Estimated Cost

Project Cost \$109,000 % Nature-Based - BCR -
Recurring costs - Issues -



FMP area



Regional view of FMP area

Flood Mitigation Project (FMP)

TitleHarris,Liberty,Montgomery,San Jacinto,Walker

ID#063000059Sponsor

RFPG recommend?-Reason for Recommendation-



Project Description

The goal of the detention facility is to reduce flooding in the East Fork watershed by constructing a 1.60-mile-long earthen impoundment that captures runoff from Winters Bayou.

Watershed HUC# (if known)-Emergency Need?-

Drainage area (mi² est.)409

Associated FME's-CountyHarris,Liberty,Montgomery,San

Associated FMS's-Associated FMP's-

Existing 100-Year Flood Risk

Flood risk type:Riverine?-Coastal?-Local?-Playa?-Other?-

Population at risk-# of structures-Critical facilities-

Farm/Ranch land impacted (acres)-Roadway(s) impacted (length)-

Number of low water crossings-Historical road closures-

100-Year Flood Risk Reduction

Population removed from 100-yr-# of structures removed from 100-yr-

Critical facilities removed from 100-yr-Farm/Ranch land removed from 100-yr (acres)-

Road removed from 100-yr (miles)-Low water crossings removed from 100-yr-

Other benefits-Reduction in # of road closures over 10 years-

Impacts

Negative impacts?-Negative impacts description-

Water supply contributions?-Water supply contribution description-

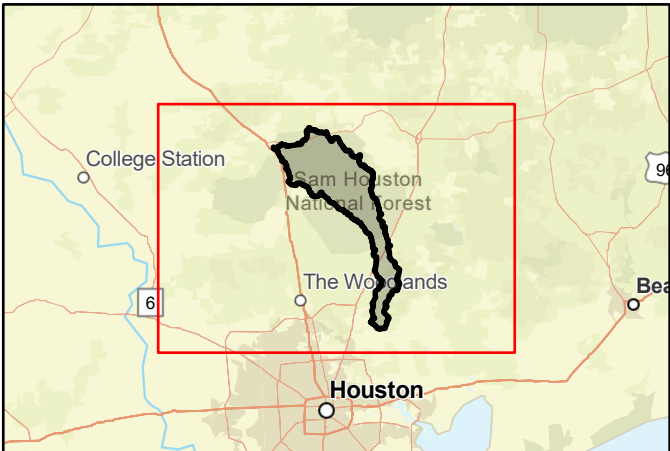
Estimated Cost

Project Cost\$165,176,000% Nature-Based-BCR-

Recurring costs-Issues-



FMP area



Regional view of FMP area

Flood Mitigation Project (FMP)

TitleBrazoria,Galveston,Fort Bend,Chambers,Harris,Liberty

ID#063000127Sponsor

RFPG recommend?-Reason for Recommendation-



Project Description

Federal projects identified in the Texas Coastal Study (2021) including Boliver Gates, Galveston Sea Wall Improvements, Ecosystem Restoration, Galveston Ring Barrier system, Clear Creek & Dickinson Bayou Gates, and non-structural measures

Watershed HUC# (if known)120401030201,120401030108,12040103010Emergency Need?-

Drainage area (mi² est.)1,905

Associated FME's -CountyBrazoria,Galveston,Fort

Associated FMS's -Associated FMP's -

Existing 100-Year Flood Risk

Flood risk type:Riverine?-Coastal?-Local?-Playa?-Other?-

Population at risk -# of structures -Critical facilities -

Farm/Ranch land impacted (acres) -Roadway(s) impacted (length) -

Number of low water crossings -Historical road closures -

100-Year Flood Risk Reduction

Population removed from 100-yr -# of structures removed from 100-yr -

Critical facilities removed from 100-yr -Farm/Ranch land removed from 100-yr (acres) -

Road removed from 100-yr (miles) -Low water crossings removed from 100-yr -

Other benefits -Reduction in # of road closures over 10 years -

Impacts

Negative impacts?-Negative impacts description -

Water supply contributions? -Water supply contribution description -

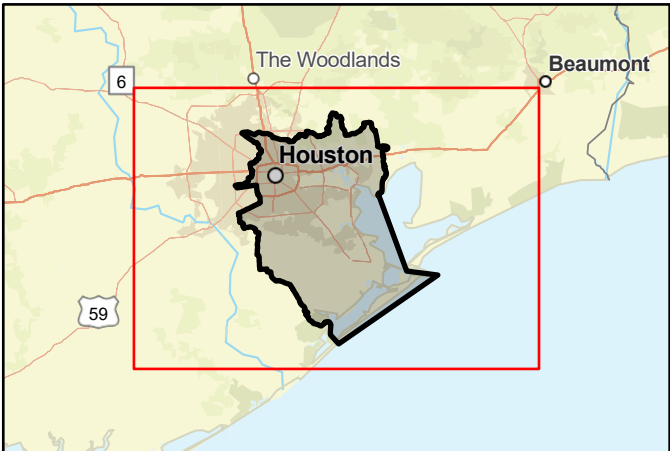
Estimated Cost

Project Cost\$23,103,015,000% Nature-Based -BCR -

Recurring costs -Issues -



FMP area



Regional view of FMP area

Flood Mitigation Project (FMP)

INSERT LOGO HERE

Title Harris

ID# 063000167 Sponsor

RFPG recommend? - Reason for Recommendation -

Project Description

Projects submitted as part of the CDBG MIT grant in Greens Bayou.

Watershed HUC# (if known) - Emergency Need? -
Drainage area (mi² est.) 166
Associated FME's - County Harris
Associated FMS's - Associated FMP's -

Existing 100-Year Flood Risk

Flood risk type: Riverine? - Coastal? - Local? - Playa? - Other? -
Population at risk - # of structures - Critical facilities -
Farm/Ranch land impacted (acres) - Roadway(s) impacted (length) -
Number of low water crossings - Historical road closures -

100-Year Flood Risk Reduction

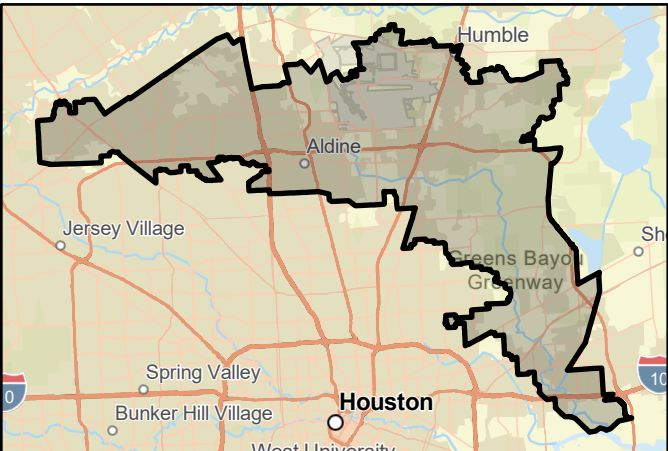
Population removed from 100-yr - # of structures removed from 100-yr -
Critical facilities removed from 100-yr - Farm/Ranch land removed from 100-yr (acres) -
Road removed from 100-yr (miles) - Low water crossings removed from 100-yr -
Other benefits - Reduction in # of road closures over 10 years -

Impacts

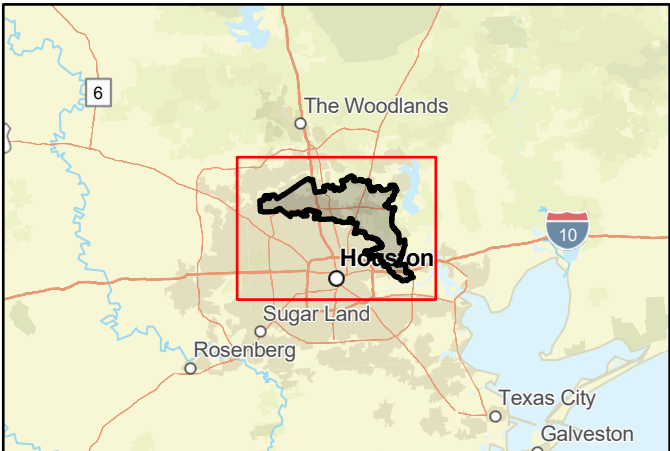
Negative impacts? - Negative impacts description -
Water supply contributions? - Water supply contribution description -

Estimated Cost

Project Cost \$120,284,000 % Nature-Based - BCR -
Recurring costs - Issues -



FMP area



Regional view of FMP area

Flood Mitigation Project (FMP)

Title Harris

ID# 063000040 Sponsor

RFPG recommend? - Reason for Recommendation -



Project Description

The goal of the C-23 activity, located south of Tidwell road and west of Wayside drive, is to improve stormwater channel conveyance of Halls Bayou tributary P118-08-00 and to create approximately 50 acre-feet of stormwater detention storage.

Watershed HUC# (if known) 120401040605,120401040601,12040104030 Emergency Need? -

Drainage area (mi² est.) 44

Associated FME's - County Harris

Associated FMS's - Associated FMP's -

Existing 100-Year Flood Risk

Flood risk type: Riverine? - Coastal? - Local? - Playa? - Other? -

Population at risk - # of structures - Critical facilities -

Farm/Ranch land impacted (acres) - Roadway(s) impacted (length) -

Number of low water crossings - Historical road closures -

100-Year Flood Risk Reduction

Population removed from 100-yr - # of structures removed from 100-yr -

Critical facilities removed from 100-yr - Farm/Ranch land removed from 100-yr (acres) -

Road removed from 100-yr (miles) - Low water crossings removed from 100-yr -

Other benefits - Reduction in # of road closures over 10 years -

Impacts

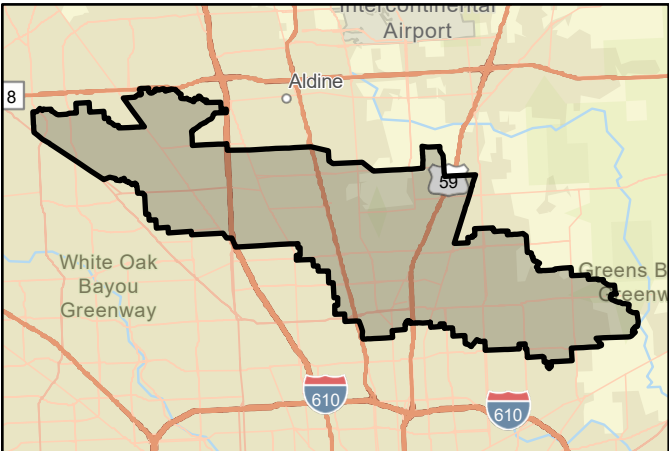
Negative impacts? - Negative impacts description -

Water supply contributions? - Water supply contribution description -

Estimated Cost

Project Cost \$99,653,000 % Nature-Based - BCR -

Recurring costs - Issues -



FMP area



Regional view of FMP area

Flood Mitigation Project (FMP)

Title

Montgomery,Grimes

ID#

063000060

 Sponsor

RFPG recommend?

-

 Reason for Recommendation

-



Project Description

The goal of the detention pond is to reduce flooding in the Lake Creek and West Fork watersheds by constructing a 1.2-mile-long earthen impoundment that captures runoff from Garrett’s Creek.

Watershed HUC# (if known)

120401010101,120401010301,12040101030

 Emergency Need?

-

Drainage area (mi² est.)

104

Associated FME's

-

 County

Montgomery,Grimes

Associated FMS's

-

 Associated FMP's

-

Existing 100-Year Flood Risk

Flood risk type: Riverine?

-

 Coastal?

-

 Local?

-

 Playa?

-

 Other?

-

Population at risk

-

 # of structures

-

 Critical facilities

-

Farm/Ranch land impacted (acres)

-

 Roadway(s) impacted (length)

-

Number of low water crossings

-

 Historical road closures

-

100-Year Flood Risk Reduction

Population removed from 100-yr

-

 # of structures removed from 100-yr

-

Critical facilities removed from 100-yr

-

 Farm/Ranch land removed from 100-yr (acres)

-

Road removed from 100-yr (miles)

-

 Low water crossings removed from 100-yr

-

Other benefits

-

 Reduction in # of road closures over 10 years

-

Impacts

Negative impacts?

-

 Negative impacts description

-

Water supply contributions?

-

 Water supply contribution description

-

Estimated Cost

Project Cost

\$129,569,000

 % Nature-Based

-

 BCR

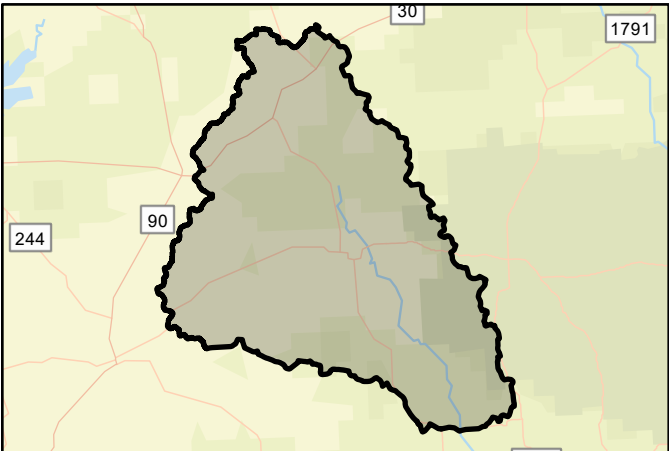
-

Recurring costs

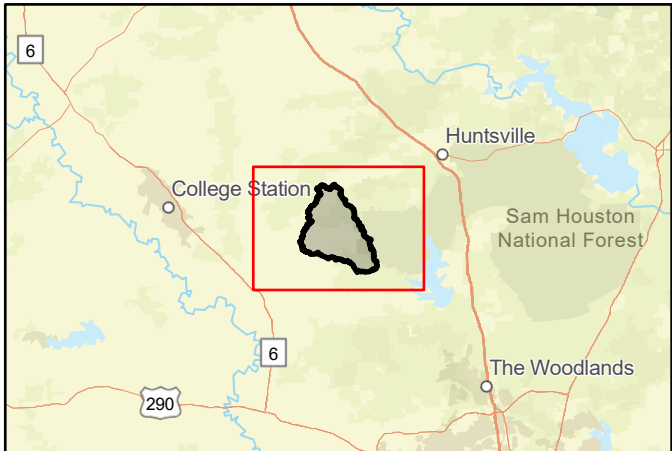
-

 Issues

-



FMP area



Regional view of FMP area

Flood Mitigation Project (FMP)

INSERT LOGO HERE

Title

ID# Sponsor

RFPG recommend? Reason for Recommendation

Project Description

Further refine the LCC Alt. Combination 3 as proposed as part of the LCCDBFMP (2021), including detention channel benching, a diversion tunnel, capacity improvements, and an auxiliary opening.

Watershed HUC# (if known) Emergency Need?
Drainage area (mi² est.)
Associated FME's County
Associated FMS's Associated FMP's

Existing 100-Year Flood Risk

Flood risk type: Riverine? Coastal? Local? Playa? Other?
Population at risk # of structures Critical facilities
Farm/Ranch land impacted (acres) Roadway(s) impacted (length)
Number of low water crossings Historical road closures

100-Year Flood Risk Reduction

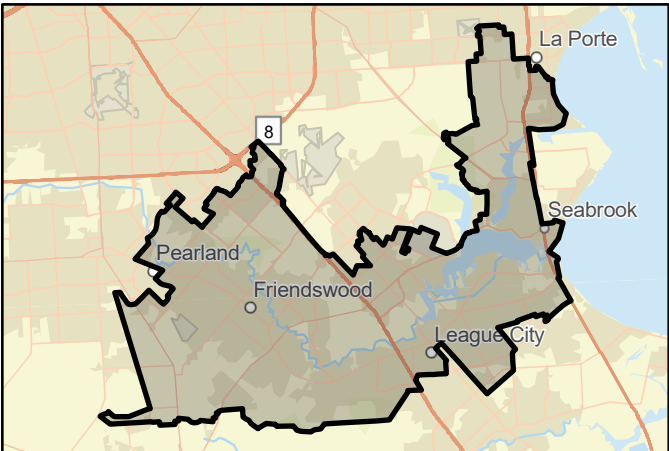
Population removed from 100-yr # of structures removed from 100-yr
Critical facilities removed from 100-yr Farm/Ranch land removed from 100-yr (acres)
Road removed from 100-yr (miles) Low water crossings removed from 100-yr
Other benefits Reduction in # of road closures over 10 years

Impacts

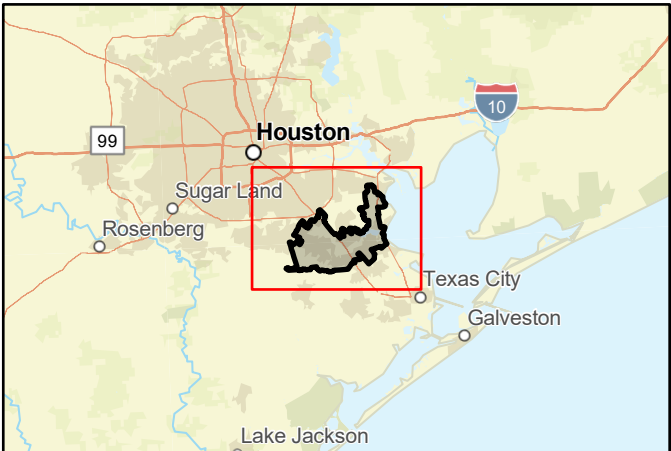
Negative impacts? Negative impacts description
Water supply contributions? Water supply contribution description

Estimated Cost

Project Cost % Nature-Based BCR
Recurring costs Issues



FMP area



Regional view of FMP area

Flood Mitigation Project (FMP)

TitleLiberty, Montgomery, San Jacinto, Walker

ID#063000061Sponsor

RFPG recommend?-Reason for Recommendation-



Project Description

Widen 4.3-mile-long stretch to 800 feet starting 4 feet above natural stream bed, to increase conveyance capacity. Must be completed with 4.7-mile-long detention at SH105 and 3.2-mile-long at Walker Creek to reduce flooding in Peach Creek watershed.

Watershed HUC# (if known)120401030110, 120401030102, 12040103010Emergency Need?-

Drainage area (mi² est.)158

Associated FME's-CountyLiberty, Montgomery, San

Associated FMS's-Associated FMP's-

Existing 100-Year Flood Risk

Flood risk type:Riverine?-Coastal?-Local?-Playa?-Other?-

Population at risk-# of structures-Critical facilities-

Farm/Ranch land impacted (acres)-Roadway(s) impacted (length)-

Number of low water crossings-Historical road closures-

100-Year Flood Risk Reduction

Population removed from 100-yr-# of structures removed from 100-yr-

Critical facilities removed from 100-yr-Farm/Ranch land removed from 100-yr (acres)-

Road removed from 100-yr (miles)-Low water crossings removed from 100-yr-

Other benefits-Reduction in # of road closures over 10 years-

Impacts

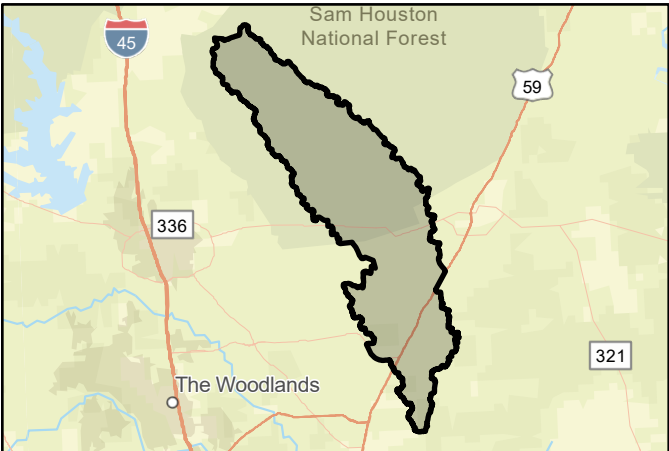
Negative impacts?-Negative impacts description-

Water supply contributions?-Water supply contribution description-

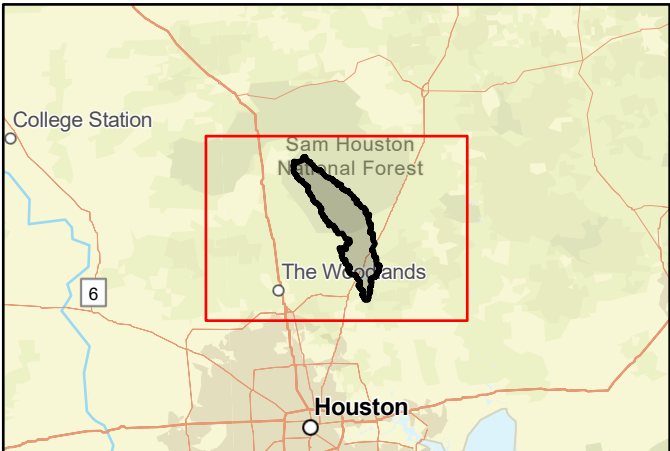
Estimated Cost

Project Cost\$803,130,000% Nature-Based-BCR-

Recurring costs-Issues-



FMP area



Regional view of FMP area

Flood Mitigation Project (FMP)

INSERT LOGO HERE

Title Fort Bend,Harris

ID# 063000037 Sponsor

RFPG recommend? - Reason for Recommendation -

Project Description

Grant application consists of 3 projects in the Sims Bayou Watershed.

Watershed HUC# (if known) 120401040703,120401040402,12040104050 Emergency Need? -
Drainage area (mi² est.) 93
Associated FME's - County Fort Bend,Harris
Associated FMS's - Associated FMP's -

Existing 100-Year Flood Risk

Flood risk type: Riverine? Yes Coastal? No Local? Yes Playa? No Other? No
Population at risk 17,633 # of structures 4,039 Critical facilities 35
Farm/Ranch land impacted (acres) 5 Roadway(s) impacted (length) 53
Number of low water crossings 4 Historical road closures -

100-Year Flood Risk Reduction

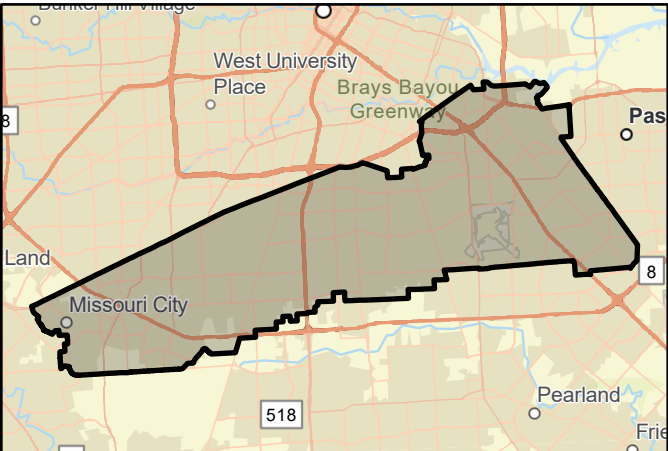
Population removed from 100-yr - # of structures removed from 100-yr -
Critical facilities removed from 100-yr - Farm/Ranch land removed from 100-yr (acres) -
Road removed from 100-yr (miles) - Low water crossings removed from 100-yr -
Other benefits - Reduction in # of road closures over 10 years -

Impacts

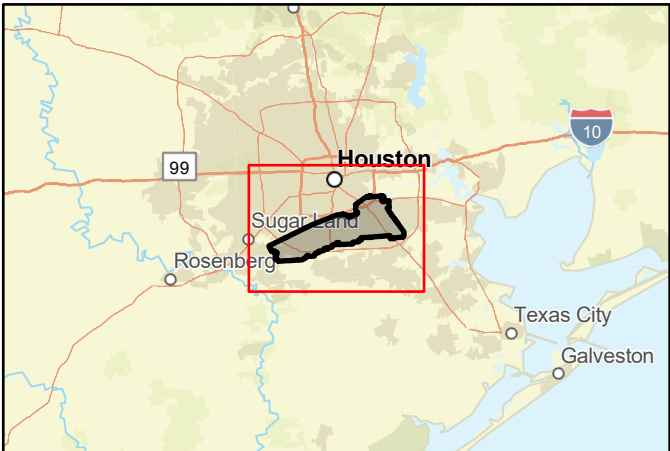
Negative impacts? - Negative impacts description -
Water supply contributions? - Water supply contribution description -

Estimated Cost

Project Cost \$99,653,000 % Nature-Based - BCR -
Recurring costs - Issues -



FMP area



Regional view of FMP area

Flood Mitigation Project (FMP)

INSERT LOGO HERE

Title Harris,Waller,Montgomery,Grimes

ID# 063000062 Sponsor

RFPG recommend? - Reason for Recommendation -

Project Description

8.9-mile, 200-foot-wide benched improvement 4 feet above Woodlands channel and 6.9-mile, 300-foot-wide benched improvement 4 feet above I-45 channel. Must be completed with 0.7-mile detention for Birch Creek and 1.2-mile for Walnut Creek.

Watershed HUC# (if known) 120401030110,120401030102,12040103010 Emergency Need? -
Drainage area (mi² est.) 386
Associated FME's - County Harris,Waller,Montgomery,Grimes
Associated FMS's - Associated FMP's -

Existing 100-Year Flood Risk

Flood risk type: Riverine? - Coastal? - Local? - Playa? - Other? -
Population at risk - # of structures - Critical facilities -
Farm/Ranch land impacted (acres) - Roadway(s) impacted (length) -
Number of low water crossings - Historical road closures -

100-Year Flood Risk Reduction

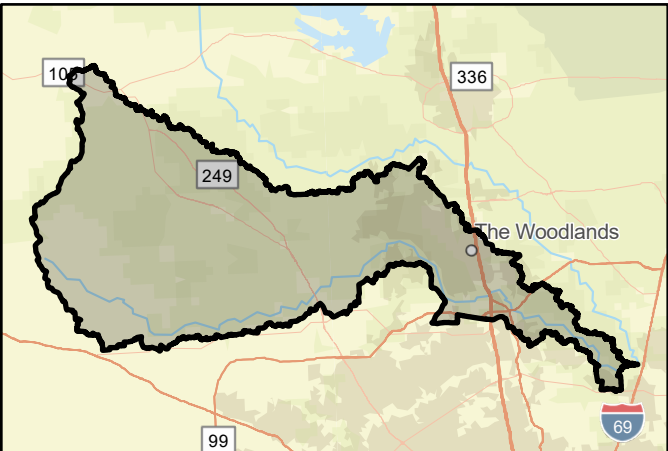
Population removed from 100-yr - # of structures removed from 100-yr -
Critical facilities removed from 100-yr - Farm/Ranch land removed from 100-yr (acres) -
Road removed from 100-yr (miles) - Low water crossings removed from 100-yr -
Other benefits - Reduction in # of road closures over 10 years -

Impacts

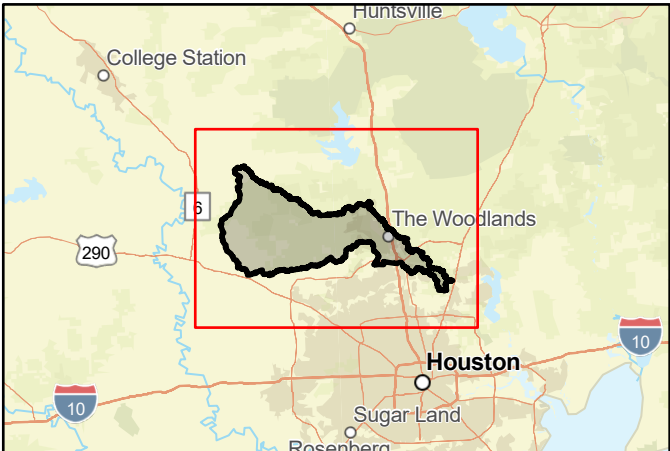
Negative impacts? - Negative impacts description -
Water supply contributions? - Water supply contribution description -

Estimated Cost

Project Cost \$384,751,000 % Nature-Based - BCR -
Recurring costs - Issues -



FMP area



Regional view of FMP area

Flood Mitigation Project (FMP)

TitleMontgomery,Grimes

ID#063000063Sponsor

RFPG recommend?-Reason for Recommendation-



Project Description

Widen a 9.3-mile-long stretch to increase conveyance capacity of West Fork with 500-foot bench located 2-feet above normal flow elevation. Additional 0.76-mile-long detention pond at Caney Creek and 0.83-mile-long at Little Caney Creek.

Watershed HUC# (if known)120401030110,120401030102,12040103010Emergency Need?-

Drainage area (mi² est.)421

Associated FME's-CountyMontgomery,Grimes

Associated FMS's-Associated FMP's-

Existing 100-Year Flood Risk

Flood risk type:Riverine?-Coastal?-Local?-Playa?-Other?-

Population at risk-# of structures-Critical facilities-

Farm/Ranch land impacted (acres)-Roadway(s) impacted (length)-

Number of low water crossings-Historical road closures-

100-Year Flood Risk Reduction

Population removed from 100-yr-# of structures removed from 100-yr-

Critical facilities removed from 100-yr-Farm/Ranch land removed from 100-yr (acres)-

Road removed from 100-yr (miles)-Low water crossings removed from 100-yr-

Other benefits-Reduction in # of road closures over 10 years-

Impacts

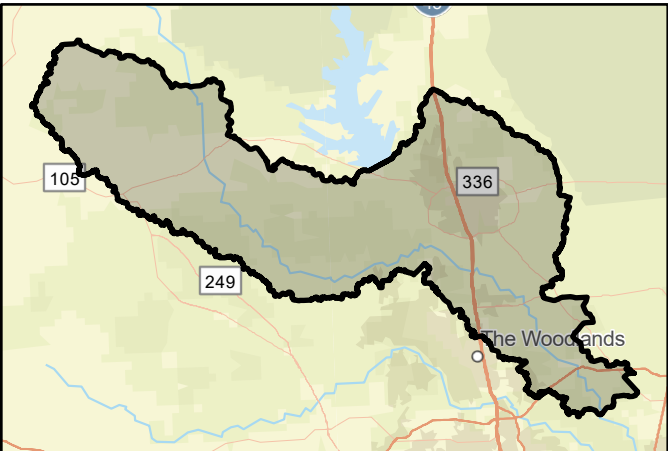
Negative impacts?-Negative impacts description-

Water supply contributions?-Water supply contribution description-

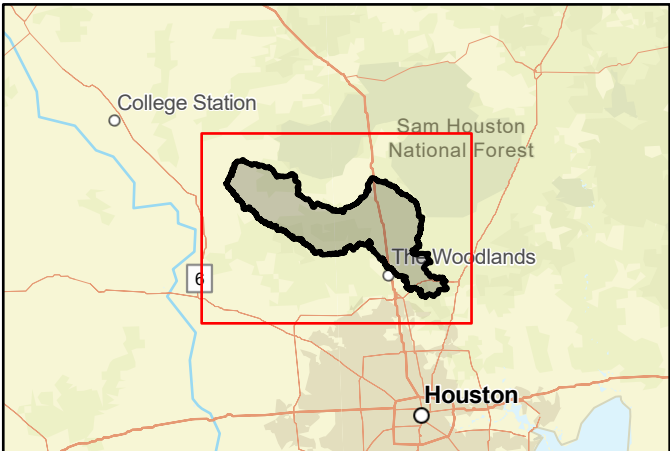
Estimated Cost

Project Cost\$434,204,000% Nature-Based-BCR-

Recurring costs-Issues-



FMP area



Regional view of FMP area

Flood Mitigation Project (FMP)

Title Harris,Montgomery

ID# 063000064 Sponsor

RFPG recommend? - Reason for Recommendation -



Project Description

Channel improvement is to reduce flooding in the West Fork watershed by widening a 5-mile-long stretch to increase conveyance capacity of West Fork in order to lower the water surface elevation. Conduct after detention on Lake Creek or Spring Creek.

Watershed HUC# (if known) 120401010502,120401010501,12040101040 Emergency Need? -

Drainage area (mi² est.) 141

Associated FME's - County Harris,Montgomery

Associated FMS's - Associated FMP's -

Existing 100-Year Flood Risk

Flood risk type: Riverine? - Coastal? - Local? - Playa? - Other? -

Population at risk - # of structures - Critical facilities -

Farm/Ranch land impacted (acres) - Roadway(s) impacted (length) -

Number of low water crossings - Historical road closures -

100-Year Flood Risk Reduction

Population removed from 100-yr - # of structures removed from 100-yr -

Critical facilities removed from 100-yr - Farm/Ranch land removed from 100-yr (acres) -

Road removed from 100-yr (miles) - Low water crossings removed from 100-yr -

Other benefits - Reduction in # of road closures over 10 years -

Impacts

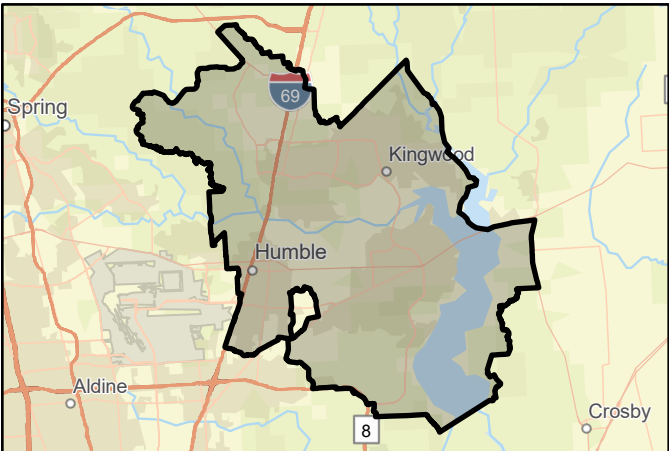
Negative impacts? - Negative impacts description -

Water supply contributions? - Water supply contribution description -

Estimated Cost

Project Cost \$838,737,000 % Nature-Based - BCR -

Recurring costs - Issues -



FMP area



Regional view of FMP area

Flood Mitigation Project (FMP)

INSERT LOGO HERE

Title -

ID# 063000046 Sponsor -

RFPG recommend? - Reason for Recommendation -

Project Description

The flood and drainage activity for Kolbe Road include the addition of storm sewers under the existing roadside ditches. The increased drainage capacity, along with the detention component, reduces ponding depths up to 7 inches.

Watershed HUC# (if known) - Emergency Need? -
Drainage area (mi² est.) 111
Associated FME's - County -
Associated FMS's - Associated FMP's -

Existing 100-Year Flood Risk

Flood risk type: Riverine? - Coastal? - Local? - Playa? - Other? -
Population at risk - # of structures - Critical facilities -
Farm/Ranch land impacted (acres) - Roadway(s) impacted (length) -
Number of low water crossings - Historical road closures -

100-Year Flood Risk Reduction

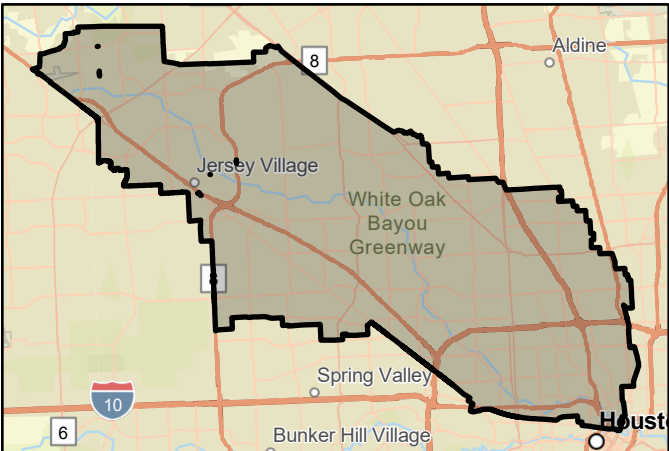
Population removed from 100-yr - # of structures removed from 100-yr -
Critical facilities removed from 100-yr - Farm/Ranch land removed from 100-yr (acres) -
Road removed from 100-yr (miles) - Low water crossings removed from 100-yr -
Other benefits - Reduction in # of road closures over 10 years -

Impacts

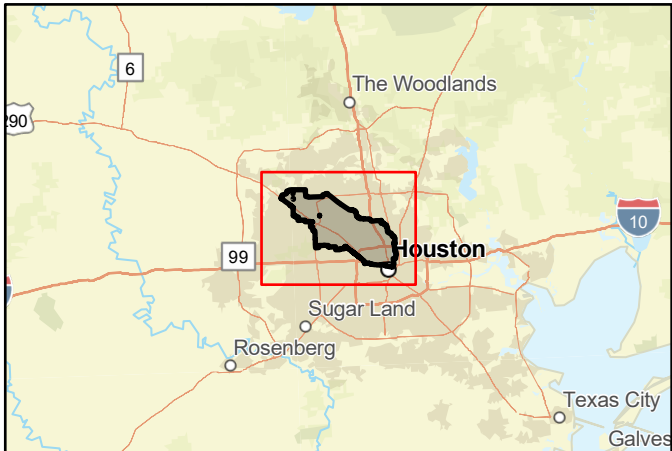
Negative impacts? - Negative impacts description -
Water supply contributions? - Water supply contribution description -

Estimated Cost

Project Cost - % Nature-Based - BCR -
Recurring costs - Issues -



FMP area



Regional view of FMP area